

Standards

Quartz Essentials

RONDA slimtech Series 1000

2

RONDA normtech Series 700 & 6000

4

RONDA powertech Series 500

6

Quartz Essentials RONDA slimtech

Series 1000

Extra small and slim movements for exclusive styles

4 ¼'''



Cal. 1042 • 2.90 mm
Swiss Made & Swiss Parts

3 ¾ × 6'''



Cal. 1032 • 1.95 mm
Swiss Made & Swiss Parts

6 ¾ × 8'''



Cal. 1062 • 1.90 mm
Swiss Made & Swiss Parts



Cal. 1063 • 1.90 mm
Swiss Made & Swiss Parts



Cal. 1064 • 1.90 mm
Swiss Made & Swiss Parts



Cal. 1069 • 2.30 mm
Swiss Made & Swiss Parts

- Metal movements, repairable
- Complete interchangeability between 1062-1064, 1002-1009 and 1012-1019
- Remote sweep second
for ladies: 1064 at 4.80 mm
for gents: 1069 at 6.30 mm
- Long battery-life: up to 6 years
- Swiss Made 3 hand movements with EOL System
- Power-saving mechanism except calibers 1042 & 1032

10 ½'''



Cal. 1002 • 1.90 mm
Swiss Made

10 ½'''



Cal. 1005 • 1.90 mm
Swiss Made

11 ½'''



Cal. 1012 • 1.90 mm
Swiss Made

11 ½'''



Cal. 1015 • 1.90 mm
Swiss Made



Cal. 1003 • 1.90 mm
Swiss Made



Cal. 1006 • 1.90 mm
Swiss Made



Cal. 1013 • 1.90 mm
Swiss Made



Cal. 1016 • 1.90 mm
Swiss Made



Cal. 1004 • 1.90 mm
Swiss Made



Cal. 1009 • 1.90 mm
Swiss Made



Cal. 1014 • 1.90 mm
Swiss Made



Cal. 1019 • 1.90 mm
Swiss Made

Series 700 & 6000
5 1/2''' to 11 1/2''' with long battery-life

5 1/2'''



Cal. 751 • 2.50 mm
Swiss Made & Swiss Parts

6 3/4 × 8'''



Cal. 762 • 2.50 mm
Swiss Made

7 3/4'''



Cal. 772 • 2.50 mm
Swiss Made & Swiss Parts



Cal. 753 • 2.50 mm
Swiss Made & Swiss Parts



Cal. 763 • 2.50 mm
Swiss Made



Cal. 773 • 2.50 mm
Swiss Made & Swiss Parts



Cal. 756 • 3.10 mm
Swiss Made & Swiss Parts
Electronic Time Setting



Cal. 774 • 2.50 mm
Swiss Made & Swiss Parts



Cal. 775 • 2.50 mm
Swiss Made & Swiss Parts

- Metal movements, repairable
- Many high hand heights available
- Very long battery-life: up to 10 years, Lithium over 10 years
- Big Date with direct change from 31 to 01
- Swiss Made 3 hand movements with EOL System
- Power-saving mechanism

8 ¾'''



Cal. 782 • 2.50 mm
Swiss Made & Swiss Parts

10 ½'''



Cal. 702 • 2.50 mm
Swiss Made & Swiss Parts

11 ½'''



Cal. 712 • 2.50 mm
Swiss Made & Swiss Parts

11 ½'''



Cal. 6003.D • 2.50 mm
Swiss Made



Cal. 783 • 2.50 mm
Swiss Made & Swiss Parts



Cal. 703 • 2.50 mm
Swiss Made & Swiss Parts



Cal. 713 • 2.50 mm
Swiss Made & Swiss Parts



Cal. 6004.D • 2.50 mm
Swiss Made



Cal. 784 • 2.50 mm
Swiss Made & Swiss Parts



Cal. 704 • 2.50 mm
Swiss Made & Swiss Parts



Cal. 714 • 2.50 mm
Swiss Made & Swiss Parts



Cal. 6003.B • 3.30 mm
Swiss Made & Swiss Parts
Big Date



Cal. 785 • 2.50 mm
Swiss Made & Swiss Parts



Cal. 705 • 2.50 mm
Swiss Made & Swiss Parts



Cal. 715 • 2.50 mm
Swiss Made & Swiss Parts



Cal. 6004.B • 3.30 mm
Swiss Made & Swiss Parts
Big Date



Cal. 715 Li • 4.60 mm
Swiss Made & Swiss Parts
Lithium-battery

6 $\frac{3}{4}$ × 8'''



Cal. 762 E • 2.50 mm
 Swiss Made & Swiss Parts

8 $\frac{3}{4}$ '''



backside



Cal. 763 E • 2.50 mm
 Swiss Made & Swiss Parts



Cal. 583 • 3.00 mm
 Swiss Made & Swiss Parts



Cal. 585 • 3.00 mm
 Swiss Made & Swiss Parts

- Metal movements, repairable
- Many high hand heights available
- Complete interchangeability within the 10 $\frac{1}{2}$ ''' & 11 $\frac{1}{2}$ ''' sizes
- 10 $\frac{1}{2}$ ''' & 11 $\frac{1}{2}$ ''': very powerful stepping motor
- Quick-change: big date, day-date
- Long battery-life: up to 10 years
- Power-saving mechanism

10 1/2'''



backside

10 1/2'''



Cal. 505 • 3.00 mm
Swiss Made & Swiss Parts
Cal. 505 S fix motor pulse

11 1/2'''



backside



Cal. 515 • 3.00 mm
Swiss Made & Swiss Parts
Cal. 515 S fix motor pulse



Cal. 503 • 3.00 mm
Swiss Made & Swiss Parts
Cal. 503 S fix motor pulse



Cal. 507 • 3.00 mm
Swiss Made & Swiss Parts
Day-Date



Cal. 513 • 3.00 mm
Swiss Made & Swiss Parts
Cal. 513 S fix motor pulse



Cal. 517 • 3.00 mm
Swiss Made & Swiss Parts
Day-Date



Cal. 509 • 3.00 mm
Swiss Made & Swiss Parts
Big Date



Cal. 519 • 3.00 mm
Swiss Made & Swiss Parts
Big Date

Chronographs



Quartz Specials

RONDA startech Series 3500

10

RONDA startech Series 5000

11

Quartz Essentials

RONDA xtratech Z Series

14



Quartz Specials

RONDA mastertech Series 8000

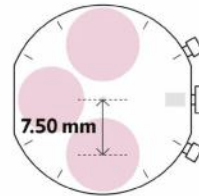
15

Comparison of sizes & counter positions

RONDA startech – 3500 Series 10 ½ x 11 ½'''

Counter 6 & 12 h: 7.50 mm distance from center
Counter 9 h: 7.00 mm distance from center

Sample eye diameter Ø 9 and 10 mm



RONDA startech – 5000 Series 12 ½'''

All counters 6.85 mm distance from center

Sample eye diameter Ø 10 mm



RONDA xtratech – Z Series 13 ¼'''

All counters 8.30 mm distance from center

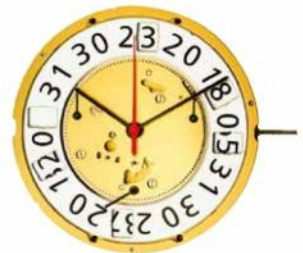
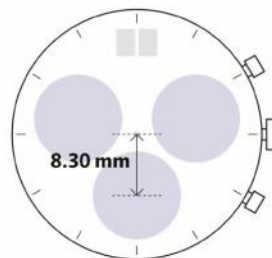
Sample eye diameter Ø 11 mm



RONDA mastertech – 8000 Series 15'''

All counters 8.30 mm distance from center

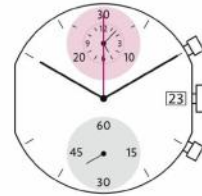
Sample eye diameter Ø 12 mm



10 ½ × 11 ½''' – 23.90 × 25.60 mm



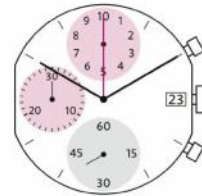
Cal. 3520.D
Chrono, Date
4.90 mm
 Battery-life 54 months
 SM – 4 Jewels / Gilt
 SP – 4 Jewels / Nickel



12h 30 Min./12 Hours
3h Date
6h Small Second



Cal. 3540.D
Chrono, Date
4.90 mm
 Battery-life 54 months
 SM – 5 Jewels / Gilt
 SP – 5 Jewels / Nickel



9h 30 Min.
12h 1/10 Sec./10 Hours
3h Date
6h Small Second

1/10s

- From small to big watches:
suits ladies, large gents or rectangular models
- Center stop-second
- Add and split functions
- Pushers with perceptible click
- One case for all versions
- Possible pusher angles at 0°, 10°, 15°, 20° or 30°
- Power-saving mechanism
- Easy handling for consumers

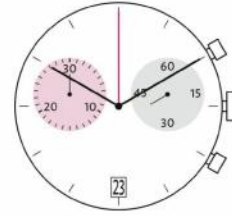
Series 5000 Chronographs

12 ½''' – 28.00 mm



Cal. 5021.D
Chrono, Date
4.40 mm

Battery-life 54 months
SM – 10 Jewels / Gilt
SP – 5 Jewels / Nickel

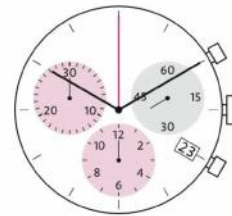


9h 30 Min.
3h Small Second
6h Date



Cal. 5030.D
Chrono, Date
4.40 mm

Battery-life 54 months
SM – 13 Jewels / Gilt
SP – 6 Jewels / Nickel

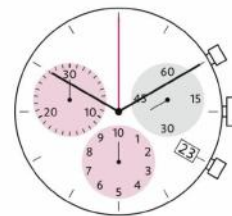


6h 12 Hours
9h 30 Min.
3h Small Second
4h Date



Cal. 5040.D
Chrono, Date
4.40 mm

Battery-life 54 months
SM – 13 Jewels / Gilt
SP – 6 Jewels / Nickel
Hand heights no 1 & 2



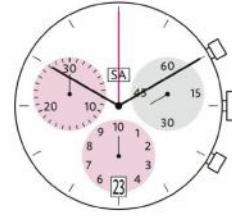
1/10s **HH**
1&2

6h 1/10 Sec./10 Hours
9h 30 Min.
3h Small Second
4h Date



Cal. 5040.E
Chrono, Day-Date
4.40 mm

Battery-life 54 months
SM – 13 Jewels / Gilt



1/10s

6h 1/10 Sec./10 Hours
9h 30 Min.
3h Small Second
6h Date
12h Day

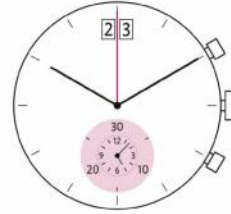
- Center stop-second
- Add and split functions
- Pushers with perceptible click

- One case for all versions (slight differences regarding hand heights)
- Possible pusher angles at 0°, 10°, 15°, 20° or 30°
- Power-saving mechanism
- Easy handling for consumers

12 ½''' – 28.00 mm



Cal. 5010.B
Chrono, Big Date
4.40 mm
 Battery-life 54 months
 SM – 10 Jewels / Gilt

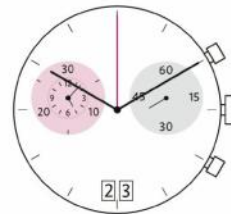


23

6h 30 Min./12 Hours
12h Big Date



Cal. 5020.B
Chrono, Big Date
4.40 mm
 Battery-life 54 months
 SM – 10 Jewels / Gilt
 SP – 5 Jewels / Nickel

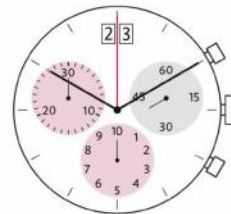


23

9h 30 Min./12 Hours
3h Small Second
6h Big Date



Cal. 5040.B
Chrono, Big Date
4.40 mm
 Battery-life 54 months
 SM – 13 Jewels / Gilt
 SP – 6 Jewels / Nickel
 Hand heights no 1 & 2

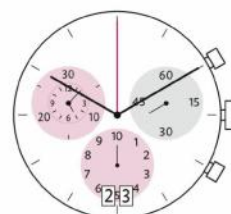


1/10s **HH 1&2** **23**

6h 1/10 Sec./10 Hours
9h 30 Min.
3h Small Second
12h Big Date



Cal. 5050.B
Chrono, Big Date
4.40 mm
 Battery-life 54 months
 SM – 13 Jewels / Gilt
 SP – 6 Jewels / Nickel



1/10s **23**

6h 1/10 Sec.
9h 30 Min./12 Hours
3h Small Second
6h Big Date

- Center stop-second
- Add and split functions
- Pushers with perceptible click
- Big Date with direct change from 31 to 01

- One case for all versions (slight differences regarding hand heights, correctors and piezo)
- Possible pusher angles at 0°, 10°, 15°, 20° or 30°
- Power-saving mechanism
- Easy handling for consumers

Series 5000 Chronographs

12 ½''' – 28.00 mm



Cal. 5050.C
Chrono, Day, Big Date
4.40 mm
Battery-life 54 months
SM – 13 Jewels / Gilt

Cal. 5051.C
same as 5050.C except:
6h Day and 12h Big Date

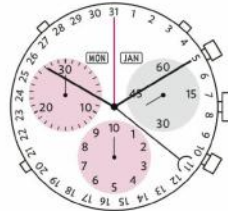


1/10s **23**

6h 1/10 Sec.
9h 30 Min./12 Hours
3h Small Second
6h Big Date
12h Day



Cal. 5040.F
Chrono, Day-Date, Month
4.40 mm
Battery-life 54 months
SM – 13 Jewels / Gilt

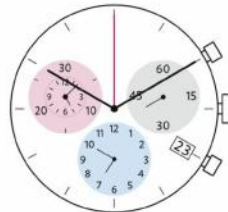


1/10s

6h 1/10 Sec./10 Hours
9h 30 Min.
3h Small Second
12h Day & Month
Date by Hand



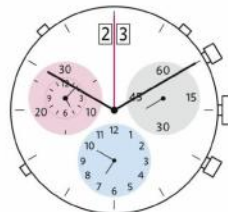
Cal. 5130.D
Chrono-Alarm, Date
4.40 mm
Battery-life 48 months
SM – 13 Jewels / Gilt
SP – 6 Jewels / Nickel



9h 30 Min./12 Hours
6h Alarm
3h Small Second
4h Date



Cal. 5130.B
Chrono-Alarm, Big Date
4.40 mm
Battery-life 48 months
SM – 13 Jewels / Gilt



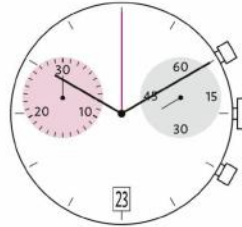
23

9h 30 Min./12 Hours
6h Alarm
3h Small Second
4h Date

13 ¼” – 30.00 mm



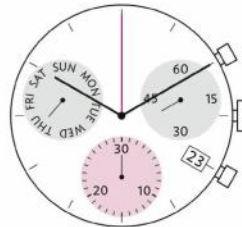
Cal. Z50
Chrono with 2 eyes at 3 - 9
4.60 mm
 SM & SP - 0 Jewels/Nickel
 Battery-life 50 months



9h 30 Minute-Counter
3h Small Second
6h Date



Cal. Z60
Chrono with 3 eyes at 3 - 6 - 9
4.60 mm
 SM & SP - 0 Jewels/Nickel
 Battery-life 50 months



6h 30 Minute-Counter
3h Small Second
4h Date
9h Day



Cal. Z50 & Z60
Versions with Large Date
4.60 mm
 Various colors available
 Calendar positions at 4h-6h-8h-12h

- Center stop-second
- Add and split functions
- Pushers with perceptible click
- Power-saving mechanism
- Easy handling for consumers

Series 8000 Chronographs

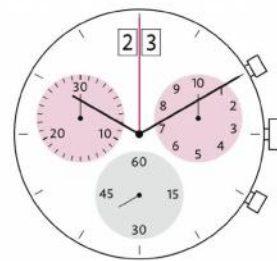
Quartz Specials
RONDA mastertech

15

15''' – 33.80 mm



Cal. 8040.B
Chrono, Big Date
5.60 mm
Battery-life 48 months
SM – 13 Jewels / Gilt

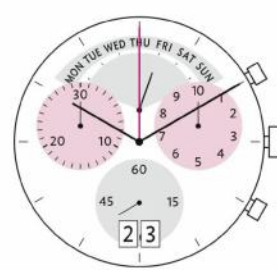


1/10s **23**

3h 1/10 Sec./10 Hours
9h 30 Min.
6h Small Second
12h Big Date



Cal. 8040.N
Chrono, Day Retrograde, Big Date
5.60 mm
Battery-life 48 months
SM – 13 Jewels / Gilt



1/10s **23**

3h 1/10 Sec./10 Hours
9h 30 Min.
6h Small Second
6h Big Date
12h Day Retrograde

- Center stop-second
- Add and split functions
- Pushers with perceptible click
- Big Date with direct change from 31 to 01
- One case for all versions
- Possible pusher angles at 0°, 10°, 15°, 20° or 30°
- Power-saving mechanism
- Easy handling for consumers

Multifunctions

Quartz Essentials

RONDA normtech Series 700 & 6000

RONDA powertech Series 500

17

Quartz Specials

RONDA startech Series 4000

18

Quartz Essentials

RONDA xtratech Series X

19

Quartz Specials

RONDA mastertech Series 7000

20

Series 500, 700 & 6000 Multifunctions

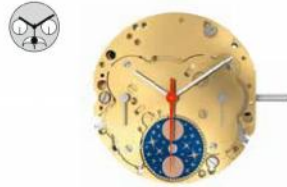
Quartz Essentials RONDA normtech

8 3/4'''



Cal. 788 • 2.98 mm
Swiss Made & Swiss Parts
Moon

10 1/2'''



Cal. 706.1 • 3.00 mm
Swiss Made & Swiss Parts
Day-Date

10 1/2'''



Cal. 708 • 2.98 mm
Swiss Made & Swiss Parts
Moon

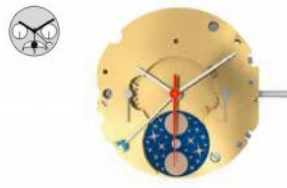
11 1/2'''



Cal. 6203.B • 3.30 mm
Swiss Made & Swiss Parts
Big Date, Dual



Cal. 706.3 • 3.00 mm
Swiss Made & Swiss Parts
Day-Date, 12 Months



Cal. 706.B • 3.70 mm
Swiss Made
Day-Date, 52 Weeks

Quartz Essentials RONDA powertech



Cal. 505.24 D • 3.00 mm
Swiss Made & Swiss Parts
24h dual



Cal. 515.24 D • 3.00 mm
Swiss Made & Swiss Parts
24h dual



Cal. 505.24 H • 3.00 mm
Swiss Made & Swiss Parts
24h dual



Cal. 515.24 H • 3.00 mm
Swiss Made & Swiss Parts
24h dual

- Metal movements, repairable
- Normtech Series 700:
Swiss Made 3 hand movements with EOL System
- Powertech Series 500:
Very powerful stepping motor
GMT function with quick change
- Power-saving mechanism

12 ½''' – 28.00 mm



Cal. 4003.B*
3 Hands, Big Date
4.40 mm
 Battery-life 60 months
 SM – 5 Jewels / Gilt / EOL*



23

12h Big Date



4003.B*

4002.B

4002.B



Cal. 4120.B
Alarm, Big Date
4.40 mm
 Battery-life 50 months
 SM – 7 Jewels / Gilt
 SP – 3 Jewels / Nickel

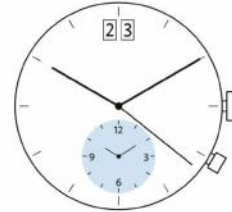


23

9h Alarm
3h Small Second
6h Big Date



Cal. 4210.B
Dual, Big Date
4.40 mm
 Battery-life 50 months
 SM – 8 Jewels / Gilt
 SP – 4 Jewels / Nickel



23

6h 2nd Time Zone
12h Big Date



Cal. 4220.B
Dual, Big Date
4.40 mm
 Battery-life 54 months
 SM – 7 Jewels / Gilt



23

9h 2nd Time Zone
3h Small Second
6h Big Date

- Big Date with direct change from 31 to 01
- Pushers with perceptible click
- One case for all versions (slight differences regarding pushers and piezo)
- Possible pusher angles at 0°, 10°, 15°, 20° or 30°
- Power-saving mechanism
- Easy handling for consumers

Series X Multifunctions

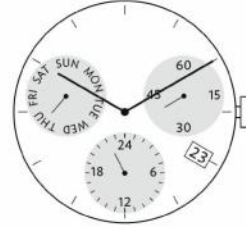
Quartz Essentials RONDA xtratech

19

13 ¼” – 30.00 mm



Cal. X30
24 Hour, Day, Date
4.60 mm
SM & SP – 0 Jewels / Nickel
Battery-life 60 months



3h Small Second
4h Date
6h 24 Hours
9h Day



Cal. X20
Day, Date
4.60 mm
SM & SP – 0 Jewels / Nickel
Battery-life 60 months



3h Small Second
6h Date
9h Day

- Metal movements, repairable
- Correction of Day and Date by stem
- Power-saving mechanism
- Easy handling for consumers

15''' – 33.80 mm



Cal. 7004.B
Small Second, Big Date
5.60 mm
 Battery-life 48 months
 SM – 6 Jewels / Gilt / EOL

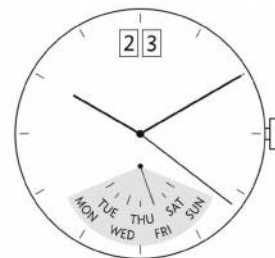


23

6h Small Second
12h Big Date



Cal. 7003.L
Day Retrograde, Big Date
5.60 mm
 Battery-life 52 months
 SM – 5 Jewels / Gilt / EOL



23

6h Day Retrograde
12h Big Date



Cal. 7003.N
Day Retrograde, Big Date
5.60 mm
 Battery-life 52 months
 SM – 5 Jewels / Gilt / EOL



23

6h Big Date
12h Day Retrograde



Cal. 7004.N
Day Retrograde, Big Date, Small Second
5.60 mm
 Battery-life 48 months
 SM – 6 Jewels / Gilt / EOL

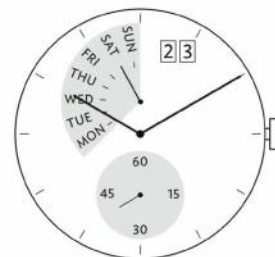


23

6h Big Date
6h Small Second
12h Day Retrograde



Cal. 7004.P
Day Retrograde, Big Date, Small Second
5.60 mm
 Battery-life 48 months
 SM – 6 Jewels / Gilt / EOL



23

1h Big Date
6h Small Second
10h Day Retrograde

- Big Date with direct change from 31 to 01
- One case for all versions

- Swiss Made 3 hand movements with EOL system

Caliber	Size	Ø Case fitting	Mvt. height	Stem height	Swiss Made	Swiss Parts	Standard Battery	Battery-life (theoretical)	High Battery	Battery-life (theoretical)
1042	4 3/4'''	10.00	2.90	0.55	5/G	5/N	335	36 m		
1032	3 3/4 × 6'''	9.00 × 13.50	1.95	0.62	7/G	7/N	317	60 m		
1062	6 3/4 × 8'''	15.30 × 17.80	1.90	0.75	4/G	1/N	321	6 y		
1063	6 3/4 × 8'''	15.30 × 17.80	1.90	0.75	5/G EOL	1/N	321	25 m	364	34 m
1064	6 3/4 × 8'''	15.30 × 17.80	1.90	0.75	6/G EOL	2/N	321	25 m	364	34 m
1069	6 3/4 × 8'''	15.30 × 17.80	2.30	1.15	6/G EOL	2/N	321	25 m	364	34 m
1002	10 1/2'''	23.30	1.90	0.75	5/G		341	40 m		
1003	10 1/2'''	23.30	1.90	0.75	8/G EOL		341	25 m	315	40 m
1004	10 1/2'''	23.30	1.90	0.75	10/G EOL		341	25 m	315	40 m
1005	10 1/2'''	23.30	1.90	0.75	8/G EOL		341	25 m	315	40 m
1006	10 1/2'''	23.30	1.90	0.75	8/G		341	25 m	315	40 m
1009	10 1/2'''	23.30	1.90	0.75	10/G EOL		341	25 m	315	40 m
1012	11 1/2'''	25.60	1.90	0.75	5/G		341	40 m		
1013	11 1/2'''	25.60	1.90	0.75	8/G EOL		341	25 m	315	40 m
1014	11 1/2'''	25.60	1.90	0.75	10/G EOL		341	25 m	315	40 m
1015	11 1/2'''	25.60	1.90	0.75	8/G EOL		341	25 m	315	40 m
1016	11 1/2'''	25.60	1.90	0.75	8/G		341	25 m	315	40 m
1019	11 1/2'''	25.60	1.90	0.75	10/G EOL		341	25 m	315	40 m

RONDA normtech

Caliber	Size	Ø Case fitting	Mvt. height	Stem height	Swiss Made	Swiss Parts	Standard Battery	Battery-life (theoretical)	High Battery	Battery-life (theoretical)
751	5 1/2'''	13.00 × 15.15	2.50	1.00	4/G	1/N	379	7 y		
753	5 1/2'''	13.00 × 15.15	2.50	1.00	5/G EOL	1/N	379	27 m	319	36 m
756	5 1/2'''	13.00 × 15.15	3.10		4/G	1/N	379	7 y		
762	6 3/4 × 8'''	15.30 × 17.80	2.50	1.00	4/G		364	10 y		
763	6 3/4 × 8'''	15.30 × 17.80	2.50	1.00	5/G EOL		364	40 m		
772	7 3/4'''	17.20	2.50	1.00	5/G	1/N	364	34 m		
773	7 3/4'''	17.20	2.50	1.00	5/G EOL	1/N	364	34 m		
774	7 3/4'''	17.20	2.50	1.00	5/G	1/N	364	34 m		
775	7 3/4'''	17.20	2.50	1.00	5/G EOL	1/N	364	34 m		
782	8 3/4'''	19.40	2.50	1.00	5/G	1/N	362	42 m		
783	8 3/4'''	19.40	2.50	1.00	5/G EOL	1/N	362	42 m		
784	8 3/4'''	19.40	2.50	1.00	5/G	1/N	362	42 m		
785	8 3/4'''	19.40	2.50	1.00	5/G EOL	1/N	362	42 m		
788	8 3/4'''	19.40	2.98	1.48	5/G EOL	1/N	362	42 m		
702	10 1/2'''	23.30	2.50	1.00	5/G	1/N	371	60 m		
703	10 1/2'''	23.30	2.50	1.00	5/G EOL	1/N	371	60 m		
704	10 1/2'''	23.30	2.50	1.00	5/G	1/N	371	60 m		
705	10 1/2'''	23.30	2.50	1.00	5/G EOL	1/N	371	60 m		
706.1	10 1/2'''	23.30	3.00	1.50	5/G EOL	1/G	371	60 m		
706.3	10 1/2'''	23.30	3.00	1.50	5/G EOL	1/G	371	60 m		
706.B	10 1/2'''	23.30	3.70	2.20	5/G EOL		371	44 m		
708	10 1/2'''	23.30	2.98	1.48	5/G EOL	1/N	371	60 m		

Technical Summary

RONDA normtech

Caliber	Size	Ø Case fitting	Mvt. height	Stem height	Swiss Made	Swiss Parts	Standard Battery	Battery-life (theoretical)
712	11½'''	25.60	2.50	1.00	5/G	1/N	371	60 m
713	11½'''	25.60	2.50	1.00	5/G EOL	1/N	371	60 m
714	11½'''	25.60	2.50	1.00	5/G	1/N	371	60 m
715	11½'''	25.60	2.50	1.00	5/G EOL	1/N	371	60 m
715 Li	11½'''	25.60	4.60	1.00	5/G EOL	5/N	CR 2016	>10 y
6003.D	11½'''	25.60	2.50	1.00	4/G EOL		373	40 m
6004.D	11½'''	25.60	2.50	1.00	5/G EOL		373	40 m
6003.B	11½'''	25.60	3.30	1.80	4/G EOL	1/N	373	40 m
6004.B	11½'''	25.60	3.30	1.80	5/G EOL	1/N	373	40 m
6203.B	11½'''	25.60	3.30	1.80	5/G EOL	1/N	373	40 m

RONDA powertech

Caliber	Size	Ø Case fitting	Mvt. height	Stem height	Swiss Made	Swiss Parts	Standard Battery	Battery-life (theoretical)
762 E	6¾ × 8'''	15.30 × 17.80	2.50	1.00	1/N	1/N	364	10 y
763 E	6¾ × 8'''	15.30 × 17.80	2.50	1.00	1/N	1/N	364	40 m
583	8¾'''	19.40	3.00	1.50	1/N	1/N	362	38 m
585	8¾'''	19.40	3.00	1.50	1/N	1/N	362	38 m
503*	10½'''	23.30	3.00	1.50	1/N	1/N	371	45 m
505*	10½'''	23.30	3.00	1.50	1/N	1/N	371	45 m
505.24 H	10½'''	23.30	3.00	1.50	1/N	1/N	371	45 m
505.24 D	10½'''	23.30	3.00	1.50	1/N	1/N	371	45 m
507	10½'''	23.30	3.00	1.50	1/N	1/N	371	45 m
509	10½'''	23.30	3.00	1.50	1/N	1/N	371	45 m
513*	11½'''	25.60	3.00	1.50	1/N	1/N	371	45 m
515*	11½'''	25.60	3.00	1.50	1/N	1/N	371	45 m
515.24 H	11½'''	25.60	3.00	1.50	1/N	1/N	371	45 m
515.24 D	11½'''	25.60	3.00	1.50	1/N	1/N	371	45 m
517	11½'''	25.60	3.00	1.50	1/N	1/N	371	45 m
519	11½'''	25.60	3.00	1.50	1/N	1/N	371	45 m

RONDA xtratech

Caliber	Size	Ø Case fitting	Mvt. height	Stem height	Swiss Made	Swiss Parts	Standard Battery	Battery-life (theoretical)
X20	13¼'''	30.00	4.60	1.75	0/N	0/N	395	60 m
X30	13¼'''	30.00	4.60	1.75	0/N	0/N	395	60 m
Z50	13¼'''	30.00	4.60	1.75	0/N	0/N	395	50 m
Z60	13¼'''	30.00	4.60	1.75	0/N	0/N	395	50 m

Caliber	Size	Ø Case fitting	Mvt. height	Stem height	Swiss Made	Swiss Parts	Battery	Battery-life (theoretical)
3520.D	10 ½ × 11 ½'''	23.90 × 25.60	4.90	1.70	4/G	4/N	384	54 m
3540.D	10 ½ × 11 ½'''	23.90 × 25.60	4.90	1.70	5/G	5/N	384	54 m
4002.B	12 ½'''	28.00	4.40	1.90	5/G		395	60 m
4003.B	12 ½'''	28.00	4.40	1.90	5/G		395	60 m
4120.B	12 ½'''	28.00	4.40	1.90	7/G	3/N	395	50 m
4210.B	12 ½'''	28.00	4.40	1.90	8/G	4/N	395	50 m
4220.B	12 ½'''	28.00	4.40	1.90	7/G		395	54 m
5021.D	12 ½'''	28.00	4.40	1.90	10/G	5/N	395	54 m
5030.D	12 ½'''	28.00	4.40	1.90	13/G	6/N	395	54 m
5040.D	12 ½'''	28.00	4.40	1.90	13/G	6/N	395	54 m
5040.E	12 ½'''	28.00	4.40	1.90	13/G		395	54 m
5010.B	12 ½'''	28.00	4.40	1.90	10/G		395	54 m
5020.B	12 ½'''	28.00	4.40	1.90	10/G	5/N	395	54 m
5040.B	12 ½'''	28.00	4.40	1.90	13/G	6/N	395	54 m
5050.B	12 ½'''	28.00	4.40	1.90	13/G	6/N	395	54 m
5050.C	12 ½'''	28.00	4.40	1.90	13/G		395	54 m
5051.C	12 ½'''	28.00	4.40	1.90	13/G		395	54 m
5040.F	12 ½'''	28.00	4.40	1.90	13/G		395	54 m
5130.D	12 ½'''	28.00	4.40	1.90	13/G	6/N	395	48 m
5130.B	12 ½'''	28.00	4.40	1.90	13/G		395	48 m

RONDA mastertech

Caliber	Size	Ø Case fitting	Mvt. height	Stem height	Swiss Made	Battery	Battery-life (theoretical)
7002.B	15'''	33.80	5.60	3.30	5/G	381	52 m
7003.B	15'''	33.80	5.60	3.30	5/G EOL	381	52 m
7004.B	15'''	33.80	5.60	3.30	6/G EOL	381	48 m
7003.L	15'''	33.80	5.60	3.30	5/G EOL	381	52 m
7003.N	15'''	33.80	5.60	3.30	5/G EOL	381	52 m
7004.N	15'''	33.80	5.60	3.30	6/G EOL	381	48 m
7004.P	15'''	33.80	5.60	3.30	6/G EOL	381	48 m
8040.B	15'''	33.80	5.60	3.30	13/G	395	48 m
8040.N	15'''	33.80	5.60	3.30	13/G	395	48 m

* also available with fix motor pulse (503 S, 505 S, 513 S, 515 S) – battery-life 24 months

4,5,7,.. = Number of jewels
N = Nickel, **G** = Gilt
EOL = End of Life System